

EL[®]MARK

The Brand of Electricity

LED FIXTURES FLCOM COB



TECHNICAL SPECIFICATION

INDOOR- SPOTLIGHTS

ELMARK[®]

The Brand of Electricity

Technical data:

- Rated voltage: 85-265V AC/ 50-60Hz
- Power: 1W; 20W; 30W; 40W
- Power supply: Control gear; DC device- driver, included in the set
- Colour temperature: 4000K;
- Type of LED: COB
- Colour: White; Black;
- Body: Aluminium
- Beam angle: 60°
- Colour rendering index: Ra≥80
- Switch on/off: >20 000
- Long life: 30 000h
- Mounting: surface
- Protection against dust and moisture: IP44

Features:

- Completely replace traditional lighting fixtures
- Pleasant and uniform light distribution
- Low power consumption
- Repeated switch on/off does not affect the lifespan
- Instant light with maximum luminous flux
- Environmentally friendly - no mercury and lead
- No ultraviolet and infrared rays
- Resistant to shock and vibration-free body
- Low heat emission

TECHNICAL SPECIFICATION

INDOOR- SPOTLIGHTS

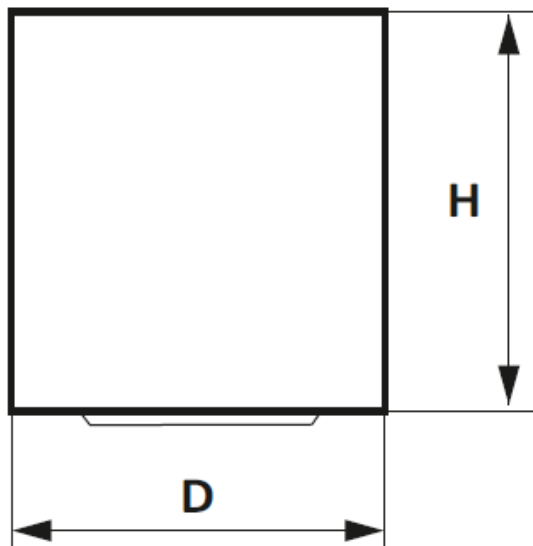
ELMARK[®]

The Brand of Electricity

Area of application:

- Commercial sites
- Administrative buildings
- Banks
- Hospitals
- Schools
- Entertainment and leisure spots

Variants and Dimensions:



- **WHITE**

Watt (W)	Whole fixture lumens (lm)	Colour temp. (K)	Size (mm)		Packing/ Box (pcs)	Catalogue number
			Diameter	Height		
10	800	4000	90	90	1/8	92FLCOM1040/WH
20	1600	4000	110	125	1/8	92FLCOM2040/WH
30	2400	4000	130	155	1/8	92FLCOM3040/WH
40	3200	4000	170	185	1/8	92FLCOM4040/WH

TECHNICAL SPECIFICATION

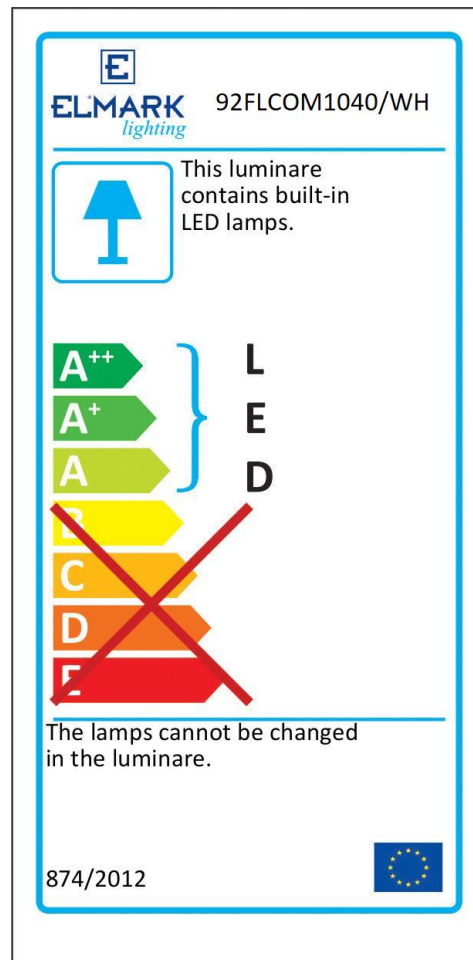
INDOOR- SPOTLIGHTS

ELMARK[®]

The Brand of Electricity

■ **BLACK**

Watt (W)	Whole fixture lumens (lm)	Colour temp. (K)	Size (mm)		Packing/ Box (pcs)	Catalogue number
			Diameter	Height		
10	800	4000	90	90	1/8	92FLCOM1040/BL
20	1600	4000	110	125	1/8	92FLCOM2040/BL
30	2400	4000	130	155	1/8	92FLCOM3040/BL
40	3200	4000	170	185	1/8	92FLCOM4040/BL



EN 55015 • EN 61000-3-2 • EN 61000-3-3 • EN 61547 • EN 60598-1 • EN 60598-2-2 • EN 61347-1 • EN 61347-2-13 • EN 13032-4

